



THE PRIORY RUSKIN ACADEMY **SIXTH FORM** PROSPECTUS 2023-2024



Ruskin Academy is part of The Priory Federation of Academies Trust. The Trust mission is "To improve the life chances of our students so they become true citizens of the world" through our core values of Wisdom, Curiosity, Generosity, Courage and Passion.

WELCOME TO THE PRIORY RUSKIN ACADEMY SIXTH FORM

We are delighted that you have expressed an interest in The Priory Ruskin Academy Sixth Form, a vibrant and stimulating learning environment providing specialist staff and excellent facilities that enable our students to develop both academically and as well-rounded and fulfilled young adults.

During their time at Ruskin's Sixth Form, students have important decisions to make and we ensure they are fully supported in every area of their Sixth Form experience, from course choices and advice on how to study independently to individual guidance through their university, apprenticeship or employment applications.

In addition to academic support, the emotional well-being of our students is our highest priority and students are supported within a pastoral, tutorial and academic structure designed to meet each individual's needs.

Our commitment to academic success coupled with extensive enrichment opportunities ensures our students leave the Sixth Form with excellent qualifications, a greater understanding of the important role that they have to play in the wider community and a desire to take on the next exciting challenge in their lives. We look forward to working with you during this important time.

Ms R Wyles, Headteacher





'The Academy's expectation for students is high but so too is it's desire to develop rounded, cultured, independent thinkers who are well prepared and ambitious for their next step.'



'Sixth Form Enrichment opportunities at Ruskin are amazing. There is so much variety - everyone can find something they really enjoy.'

Sixth Form student



EMPOWERING INTELLECTUAL CURIOSITY

The Priory Ruskin Academy Sixth Form offers an extensive range of courses, all taught by dedicated and professional staff who inspire students to achieve their full potential.

Students are able to choose from a range of A Level and BTEC (level 3) courses, allowing students to pursue a very traditional academic pathway, a more vocational route or a balance of the two.

Students are able to study three subjects: 3 A Levels, 3 BTEC's or a combination.

Students are encouraged to enrich their curriculum and personalise their learning by undertaking the Priory Award, volunteering placements or work experience.

There are also numerous trips and visits for students to participate in, ranging from art and theatre experiences to field trips nationally and internationally to support academic and personal development.

All students have a Form Tutor with whom they meet on a daily basis. Students and Form Tutors are supported by the Sixth Form Lead, along with a non-teaching progress and support manager.

The Sixth Form Team also develops and maintains close links with the families and carers of our students to assist them in supporting their child to achieve their aspirations.

Progress reports are produced at regular intervals throughout the year allowing students and their families to assess their academic progress and efforts made. The Sixth Form team will continually monitor the achievements of the students in their care, celebrating success and implementing supportive strategies where necessary.

ENRICHMENT PROGRAMME

Life at The Priory Ruskin Academy Sixth Form is all about new challenges and, throughout their two years in the Sixth Form, there is an expectation for students to become involved in the many extra-curricular activities on offer.

The opportunities are varied and include: The Duke of Edinburgh Award Scheme, The National Citizenship Service, successful competitive sports teams, music lessons, non-competitive sports and fitness activities, cookery lessons, core mathematics qualification and many senior student roles across the academy - to name just a few.

It is an expectation that all students complete the Key Stage 5 Priory Award which, as well as rewarding progress in their courses, sees students complete 120 hours of personal development and a project. This will ensure students stand out in university and employment applications.

The enrichment activities, centered on a commitment to study and wellbeing, very much depends on their own interests, with many of the current opportunities being the initiative of individual students; we actively welcome new ideas from our student body.

Being involved in enrichment activities gives students the opportunity to participate in the local community, be active, be creative, engage in debate and work with others.

ACTIVITIES INCLUDE:

- Work Placements
- Philosophy Club
- Sports Fixtures in; Netball, Rugby and Football, including participation in county leagues
- Completion of the Priory Award
- First Aid Courses
- AS French
- Extended Project Qualification (EPQ)
- Career Development Days
- Cultural Capital
- Fitness Suite
- Self Defence
- Yoga
- Pottery
- Art Therapy





'The academy has a strong sense of community and there is an expectation that Sixth Form students are not only part of this but also take responsibility for helping shape it.'

FOSTERING MUTUAL RESPECT

The Priory Ruskin Academy Sixth Form encourages its students to hold positions of responsibility. The highest honour is to represent the academy as either Head Boy or Head Girl.

Other positions of responsibility include Deputy Head Boy and Deputy Head Girl, Values Leaders, Prefects, Senior House Captains and Senior Subject Leaders. All Sixth Form students are expected to act as role models and will be Form Leaders during Year 12 in House blocks.

Our established Mentoring Scheme sees Sixth Form students support the academic and social progress of younger students within the academy. This programme has seen great success both in terms of settling new students into the academy, as well as providing our Sixth Form students with invaluable interpersonal skills and increased confidence.

Sixth Formers are operating in a range of 'Ambassador' roles, including supporting Year 11 students with their GCSE studies.

Sixth Form students facilitate the House Councils which meets regularly with the Headteacher and other senior staff. This allows them to fully voice their own views and those of the younger students they represent.



'The Key Stage 5 Award gives Year 12 students a real sense of purpose by matching their current studies to their future career pathways through enrichment and challenge.'

Head of Sixth Form



THE PRIORY AWARD

DESCRIPTION OF COURSE

The Priory Award was introduced across all Priory Federation Academies in September 2016.

The purpose of The Priory Award is to provide a framework for all students which recognises the full range of their achievements and learning experiences including academic, technical and vocational qualifications and personal development. It is designed to be inclusive and challenging for all.

The Priory Award is a framework for a range of qualifications and experiences that our students work towards rather than a qualification in itself. It has three key components:

1. CORE LEARNING

This could be three or more A Levels or equivalent BTEC qualification for the Award.

2. PERSONAL ENRICHMENT PROGRAMME

This is an Academy-devised programme that allows students to develop a range of skills and personal qualities through personal challenge, cultural, community and physical activities involving 120 hours of activity over two years.

3. A PERSONAL PROJECT

This is a project that gives students the opportunity to pursue an in-depth study of an area of interest.

We will work with the National Baccalaureate Trust to help establish standards for the depth and quality of each component so that universities and potential employers can see the full range of our students' achievements.

'Having the opportunity to support Art lessons and run a creative club has been a wonderful experience.'

Year 12 student



THE PRIORY RUSKIN ACADEMY

GENERAL INFORMATION

DRESS CODE

In Ruskin's Sixth Form, we aim to create a professional working environment. As part of this approach we expect all members of the Sixth Form community to wear clothing which supports this ethos.

All students are expected to wear business attire suitable for the work place.

This may include a traditional suit with matching jacket and trousers, a shirt and tie and plain shoes. Additionally students may wear a suit with a matching skirt or dress. If students choose to wear a skirt, this should be worn at an appropriate length for a business environment.

- All jackets must have long sleeves which are not rolled up.
- Shoes should be sensible and appropriate for a work environment.
- Jewellery is to be kept to a minimum.
- Extreme hairstyles are not permitted.
- Tattoos must not be visible.

16-19 BURSARY FUND

There is a small fund of money available to school to assist students who may struggle financially. This money is available if the student fulfils certain criteria which are detailed on the Bursary application form. This form is available to students via our internal systems from September.

HOLIDAYS

In line with government and whole academy policy, we are unable to authorise absence for holidays unless there are exceptional circumstances. Parents/Carers who believe their circumstances are exceptional are asked to submit a letter to the Headteacher outlining the reasons for their request.

SMOKING

The Priory Ruskin Academy has a no smoking policy which must be respected by all. Students are forbidden from smoking on any part of the academy premises, or within the immediate vicinity of the academy.

Further details of all the academy's policies can be found on our website.
All students and parents should familiarise themselves with these prior to induction.



THE PRIORY RUSKIN ACADEMY

TERM DATES 2023-2024

MODULE 1

Monday 5th September to Friday 20th October 2023

MODULE 2

Monday 30th October 2023 to Friday 15th December 2023

MODULE 3

Wednesday 3rd January 2024 to Friday 9th February 2024

MODULE 4

Monday 19th February 2024 to Thursday 28th March 2024

MODULE 5

Monday 15th April 2024 to Friday 24th May 2024

MODULE 6

Monday 3rd June 2024 to Friday 19th July 2024

HOW DO I CHOOSE MY A LEVELS?

All students choose three subjects to study in Sixth Form. It is always advisable to choose subjects that compliment each other and demonstrate to universities and employers that you have a range of skills that are relevant to the course/job you are applying for.

THE SUBJECTS YOU CHOOSE SHOULD REFLECT

- Your interests and subjects that you enjoy
- Any career aspirations you have
(have you researched what the requirements are?)
- Your best chances of success
(do you prefer all exam based subjects or some subjects with coursework and examinations, such as BTEC's?)

SIXTH FORM MINIMUM ENTRY REQUIREMENTS

A LEVEL

Students wishing to pursue an A Level pathway must have achieved a minimum grade 5 in English Language, a grade 4 in Mathematics and attain the individual subject requirements, highlighted later in the prospectus.

BTEC/TECHNICAL QUALIFICATIONS

Students who wish to pursue a BTEC/Tech qualification pathway must have a minimum of five grade 4's across their GCSE's, including English and Mathematics. If students took a BTEC in lower school they will also need to achieve at least a merit in a Level 2 subject.

| AREAS OF STUDY | COMBINATION MIGHT FOCUS ON | RUSSELL GROUP PREFERENCES |
|--|---|--|
| Medical - Medicine, Veterinary medicine, Dentistry, Biomedical | Chemistry, Biology | Chemistry, Biology |
| Other Medical - Nursing, Physiotherapy, Pharmacy | Health and Social Care, Sports, Science subjects | Biology |
| Engineering (Civil, Chemical, Mechanical) and Construction | Mathematics, Technology, IT, Science subjects | Mathematics, Further Mathematics, Physics, Chemistry |
| Business and Finance | Business, Arts, Mathematics, Performing Arts, Languages | Mathematics |
| Law | Business, Arts, Humanities, Performing Arts, English | History, English Language & Literature |
| Architecture | Technology, IT, Art, Mathematics | Art, Mathematics |
| Health and Sport | Health and Social Care, Sport, Science, Performing Arts | Biology |
| Languages | Languages, Law, Media, Business, English | Languages |
| Theatre, Drama | Creative Arts, Arts, Performing Arts, English | History, English Language & Literature |
| Art and Design | Creative Arts, Technology | Art Subjects |
| English/Liberal Arts/Humanities | Arts, Languages, Humanities, Performing Arts, English | History, Geography, English Literature, Languages |

THE PRIORY RUSKIN ACADEMY SUBJECTS OFFERED

We offer a wide variety of courses across the range of curriculum areas. Although the courses appear in the prospectus in alphabetical order, here we show them in their curriculum groups. Please note that these are not option columns but simply show subjects in complementary sub-groups.

A LEVEL SUBJECTS

| | |
|-----------------------|-------------|
| Art, Craft and Design | History |
| Biology | Mathematics |
| Chemistry | Photography |
| Design Technology | Physics |
| English Literature | Politics |
| French | Psychology |
| Geography | Sociology |
| Graphic Communication | |

VOCATIONAL SUBJECTS

| | |
|---|----------------------------|
| Applied Science Extended Certificate | IT Extended Certificate |
| Business Studies Extended Certificate | Law Extended Certificate |
| Criminology Diploma | Sport Extended Certificate |
| Health & Social Care Extended Certificate | Sport National Diploma |
| Health & Social Care Diploma | |

*All subjects are dependent on sufficient numbers. If there are insufficient successful applications, subjects may be withdrawn.



A LEVELS

'The creative nature of the course allows me to really explore my ideas using a range of processes and techniques, I love being able to draw inspiration from so many different sources and styles.'

Art student

COURSE: AQA ART, CRAFT AND DESIGN

QUALIFICATION: A LEVEL

ASSESSMENT: **Year 12 - Component 1:** Coursework Portfolio - 60% of final Year 12 mark. **Component 2:** Internally Set Controlled Test Assignment - 40% of final Year 12 mark. Year 12 is internally assessed and moderated.
Year 13 - Component 1: Personal Investigation - 60% of final A Level mark. This is a practical investigation supported by written material including an essay of up to 3000 words. **Component 2:** Externally Set Controlled Test Assignment - 40% of final A Level Mark. Year 13 is externally assessed and moderated by AQA.

PRE-REQUISITE RECOMMENDATIONS: To attain a 5 or above in GCSE Art.

COURSE: OCR BIOLOGY

QUALIFICATION: A LEVEL

ASSESSMENT: 100% through examinations. Key ideas in practical work are tested within the examinations and through practical endorsement.

PRE-REQUISITE RECOMMENDATIONS: To attain a grade 6-6 or above at GCSE Combined Science: Trilogy or grade 6 at GCSE Biology.



'The laboratory work is really interesting, it really develops an understanding how living things behave and work.'

Biology student

ART, CRAFT AND DESIGN

DESCRIPTION OF COURSE

In Year 12 students will complete a series of skills based workshops designed to develop their understanding of and abilities in a variety of practical disciplines, as well as enhancing their ability to discuss and analyse art work using in-depth specialist vocabulary. This first component will also consist of at least one extended project.

Students will also complete an internally set assignment where they will produce a body of work choosing their own starting point from a range of stimuli applying the knowledge and skills developed from the course so far.

A Level Component 1: Personal Investigation
- Students produce a personal investigation

based on an idea, issue, concept or theme as chosen by them. The investigation should be a coherent, in-depth study that demonstrates the student's ability to construct and develop a sustained line of reasoning from an initial starting point to a final realisation.

This is a practical unit with supporting written material of a critical, analytical nature of no less than 1000 words and no more than 3000 words. This component is worth 60% of the overall A Level grade.

A Level Component 2: Externally Set Assignment
- Students produce a body of work from a choice of eight starting points completing a final outcome under controlled conditions (15 Hours). This component is worth 40% of the overall A Level grade.

ENRICHMENT OPPORTUNITIES

Enrichment opportunities open to students for the A Level course include; gallery visits, internal and external work shops and inspirational sites and where possible, residential visits around the UK, Europe and America.

WHY STUDY ART, CRAFT & DESIGN?

The A Level Art and Design course is ideal for students who want to find a way of creatively expressing themselves and allows them to develop their own interests and enjoyment of Art and Design.

The course also gives a solid foundation of knowledge, techniques and processes appropriate to those wishing to pursue Art and Design in Higher Education or a career in the creative industries.

FOR MORE INFORMATION CONTACT: MR C MARTINI • CMARTINI@PRIORYACADEMIES.CO.UK

BIOLOGY

DESCRIPTION OF COURSE

Over the two years students will study topics related to six main areas in Biology, which are designed to prepare students for further study in Biology. These include:

Module 1: Development of Practical Skills: Tested in examinations as well as through twelve internally assessed experiments, which will act as practical endorsement, along with the A Level grade.

Module 2: Foundations in Biology: The students will study: cell structure, biological molecules, nucleotides & nucleic acids, enzymes, biological membranes, cell division, cell diversity and cellular organisation.

Module 3: Exchange and Transport: The students will study: exchange surfaces, transport in animals and transport in plants.

Module 4: Biodiversity, Evolution and Disease: The students will study: communicable diseases, disease prevention, immune system, biodiversity, classification and evolution.

Module 5: Communication, Homeostasis and Energy: The students will study: communication and homeostasis, excretion, neurones, hormones, plant and animal responses, photosynthesis and respiration.

Module 6: Genetics, Evolution and Ecosystems: The students will study: cellular control, patterns of inheritance, manipulating genomes, cloning and biotechnology, ecosystems, populations and sustainability.

WHY STUDY BIOLOGY?

The course is designed for those students who may wish to progress to further and higher education in Biology, Medicine, Sports Science or other related sciences and for those students who wish to study the world around them in more detail. They will have the opportunity to improve on their laboratory skills, through participating in twelve compulsory practical assessments, as well as more light hearted internal experiments.

Science is constantly changing, with new advances in the Biological world all the time; therefore it is an exciting opportunity to delve into the natural world a bit deeper. As teachers we are very passionate about Biology, and part of our aim is to pass this passion onto our students.

FOR MORE INFORMATION CONTACT: MR D CHALK • DCHALK@PRIORYACADEMIES.CO.UK





'You can really immerse yourself in the subject at A Level - I love the practical side.'

Chemistry student

COURSE: AQA CHEMISTRY

QUALIFICATION: A LEVEL

ASSESSMENT: 100% through examinations. Key ideas in practical work are tested within the examinations and through practical endorsement.

PRE-REQUISITE RECOMMENDATIONS: To attain a grade 6-6 or above at GCSE Combined Science: Trilogy or grade 6 at GCSE Chemistry.

CHEMISTRY

DESCRIPTION OF COURSE

Over the two years students will study topics related to the three main areas of Chemistry. This will extend their understanding from GCSE and introduce new areas of study.

Physical Chemistry

Topics include atomic structure, bonding, rates of reaction, acids and pH, chemical equilibrium and thermodynamics.

Inorganic Chemistry

Topics are related to understanding patterns in the Periodic Table, complex ions and chemical tests.

Organic Chemistry

Topics are related to homologous series such as carboxylic acids and amines, polymer structures and analytical techniques used in identifying organic compounds.

Across all three areas students will develop their practical skills and use their understanding of Chemistry to analyse and evaluate experimental work.

WHY STUDY CHEMISTRY?

The course allows students to study in more detail how the world around them works. Students will develop their analytical and problem solving skills, and learn laboratory techniques. The course is a stepping stone to further study in Chemistry, Medicine, Biology and other related sciences, but is not exclusively for students intending to pursue a future in Science.

FOR MORE INFORMATION CONTACT: MR D CHALK • DCHALK@PRIORYACADEMIES.CO.UK



COURSE: DESIGN TECHNOLOGY: PRODUCT DESIGN

QUALIFICATION: A LEVEL

ASSESSMENT: 2 Final Exams 50% - Coursework 50%

PRE-REQUISITE RECOMMENDATIONS: To achieve grade 5 or above in a GCSE Design Technology subject and achieve 4 or above in English and Mathematics.



'Product Design allows me to express my creativity through advanced physical projects to a very high standard with limitless options.'

Design Technology student

DESIGN TECHNOLOGY

Think about the products that you love. Your mobile phone with it's delicious curves was designed on a computer screen. Maybe a stunning item of furniture or a building that you admire sprang from the drawing board of an architect, and it's not a new phenomenon.

Our fascination with design goes back to flint arrow head and earthenware pots. As a designer you are at the crossroads of a number of skills.

Of course you need creativity, in order to imagine the shape and function of the object. But you'll also need to know about manufacturing processes, materials and marketing.

DESCRIPTION OF COURSE

Your A Level studies cover two main areas, exam preparation and coursework. For the exam you will be required to develop your subject knowledge in the following areas; designing and innovation, materials & components, processes, industrial & commercial practice, product analysis & systems, human responsibility and marketing & research. This is assessed by a 3 hour written exam.

For the coursework you will undertake a design & make project of your choice where you will submit a completed prototype along with a design portfolio. This project is expected to take approximately 80 hours and is assessed internally.

WHAT SKILLS WILL I LEARN?

The Product Design course will help you develop a number of skills:

- How to research appropriately for design
- How to generate design and present ideas
- How to choose appropriate materials taking into account their properties
- How to use 3D modelling software& produce prototypes
- How to make products of high quality which could be developed and marketed
- How to put over your point of view fluently
- How to work as a team to achieve results
- How to take responsibility for your own learning

WHY STUDY DESIGN TECHNOLOGY?

Design Technology could take you into a number of exciting career paths. Of course there's a direct route into an engineering degree or apprenticeship, or maybe CAD for industry appeals to you more?

This course could take you into Architecture, Teaching, Manufacturing, Advertising or Product Design.

FOR MORE INFORMATION CONTACT: MR R WILLSON • RWILLSON@PRIORYACADEMIES.CO.UK





‘English Literature is a fascinating subject which explores a variety of texts.’

English student

COURSE: AQA A LEVEL ENGLISH LITERATURE

QUALIFICATION: A LEVEL

ASSESSMENT: Paper 1: Love Through the Ages (Shakespeare and Poetry) Exam - 40% Paper 2: Texts in Shared Contexts (WW1) Exam 40% Non-Exam Assessment: Independent Critical Study - 20%

PRE-REQUISITE RECOMMENDATIONS: To achieve grade 5 or above in GCSE English Language or English Literature



‘It’s not just about learning a language...it’s also about culture and life.’

French student

COURSE: AQA FRENCH

QUALIFICATION: A LEVEL

ASSESSMENT: 100% through examinations

PRE-REQUISITE RECOMMENDATIONS: To achieve grade 5 or above in GCSE French

ENGLISH LITERATURE

DESCRIPTION OF COURSE

This course focuses on encouraging students to develop their interest in literature and literary study through reading and analysing a variety of prose, drama and poetry texts. It looks at literature through a historicist lens and involves reading from various eras. It works from the belief that texts do not work in isolation but are intrinsically linked to the society in which they are produced.

Students are encouraged to explore relationships between contexts, in both the examination components and in the independent study task. Studying texts

in this way enables students to make connections, and draw out patterns. They will develop a wide range of reading skills and become more confident and competent readers who challenge the world around them.

Texts studied across the two papers will be from authors as diverse as William Shakespeare, F. Scott Fitzgerald, Sebastian Faulks, Richard Curtis and John Donne, among others. Genres studied may include Tragedy, Comedy, Satire, World War 1 Literature, Romantic and Gothic.

WHY STUDY ENGLISH LITERATURE A LEVEL

A Level English Literature is a highly regarded and academic A Level that will help students to access university places in a wide range of subjects. It explores the big questions of human existence and requires understanding, empathy and appreciation from the reader.

During the course, students are encouraged to think critically and respond to texts in a thoughtful and nuanced way. They will have access to texts from a variety of time periods and will need to use analysis, inference, and interpretation skills throughout. The analytical skills and writing expertise that students will develop during this course will give them many of the tools necessary for Higher Education or future employment.

FOR MORE INFORMATION CONTACT: MRS C FINCH • CFINCH@PRIORYACADEMIES.CO.UK

FRENCH

DESCRIPTION OF COURSE

Students will be required to listen and respond to a variety of spoken sources as well as read and respond to a variety of written texts, use language accurately to express ideas and understand and apply grammatical structures.

Over the two years, students will study four topics with reference to target language countries as well as in a wider, global context. These include:

Aspects of French - speaking society: current trends (family changes, cyber-society, voluntary work)

- **Aspects of political life in French speaking world:** (politics, immigration, demonstrations)
- **Aspects of French - speaking society:** current issues (tolerance of others, basic laws)
- **Artistic culture in French speaking world:** (music, films, literature, regional and national heritage)

- **Aspects of political life in French speaking world:** (politics, immigration, demonstrations)

Examinations: Listening, Reading and Writing Written paper

2 hours 30 minutes - 50% of A Level

Writing

Written exam: 2 hours - 20% of A Level

Speaking

Oral exam: 21-23 minutes (including 5 minutes preparation time) - 30% of A Level

WHY STUDY FRENCH?

The course is designed for those students who may wish to progress to further and higher education in Languages, Engineering, Law, Medicine, Journalism, Banking or a career as an entrepreneur, where you will need good language skills to effectively communicate with people in the UK or in the global market.

Historians, politicians and geographers will also benefit from developing language skills that will help them get to know the people and area that they are passionate about.

Learning a language also helps you to learn about, and appreciate, the diversity of different cultures.

FOR MORE INFORMATION CONTACT: MRS C REES • CREES@PRIORYACADEMIES.CO.UK



COURSE: EDEXCEL GEOGRAPHY

QUALIFICATION: A LEVEL

ASSESSMENT: Three examinations (each 2 hours 15 minutes) and one 3000 to 4000 word independent investigation based on fieldwork

PRE-REQUISIT RECOMMENDATIONS:
To achieve grade 5 or above in GCSE Geographs

‘A Level Geography has many really interesting topics. It has helped me understand events currently in the news and is now a subject I want to pursue at university.’

Geography student

GEOGRAPHY

DESCRIPTION OF COURSE

AQA Geography is a 2 year course. Study in Year 12 consists of two physical topics and two human topics. The physical topics include Coastal Landscapes and Tectonics. The two human topics include Globalisation and Diverse Places. The course in Year 13 includes a further two physical and two human topics. The two physical topics are The Water Cycle and The Carbon Cycle. The human topics are Superpowers and Health, Human Rights and Intervention.

Across the two years you will be required to complete four days of fieldwork to collect data for a 3000 to 4000 word independent investigation. The third exam paper will be a synoptic investigation of a contemporary geographical issue. This exam is based on a booklet that links all the different topics you will have previously studied.

Students will be loaned course text books for most topics and will be expected to do a considerable amount of independent study if they are to achieve the best from A Level Geography.

WHY STUDY GEOGRAPHY?

An A Level in Geography is highly regarded by universities and can lead to degree courses in Geography, Education, Science and Environmental Studies. It welcomed by employers in industry, management, sustainability and chartered surveying. This is because the qualification identifies you as having excellent skills and a strong work ethic.

It is a challenging qualification, which both extends and deepens your knowledge and understanding beyond GCSE Geography.

It provides the opportunity to study new and more sophisticated geographical concepts including complex natural hazards, development in LEDCs and global governance.

Studying A Level Geography deepens your understanding of the world you live in. It gives you the opportunity to study the most exciting hazards and develop an understanding of how to manage and improve the world. it is and interesting and rewarding subject.

FOR MORE INFORMATION CONTACT: MRS H SMITH • HSMITH@PRIORYACADEMIES.CO.UK

COURSE: AQA GRAPHIC COMMUNICATION

QUALIFICATION: A LEVEL

ASSESSMENT: **Y12 - Component 1:** Coursework Portfolio - 60% of final mark, **Component 2:** Internally set controlled test assignment - 40% of final Y12 mark. Year 12 is internally assessed and moderated. **Year 13 - Component 1:** Personal Investigation - 60% of final A Level mark. This is a practical investigation supported by written material, including an extended essay of up to 3000 words. **Component 2:** Externally set controlled test assignment - 40% of final A Level mark. Year 13 is externally assessed and moderated by AQA.

PRE-REQUISIT RECOMMENDATIONS: To achieve grade 5 or above in a Visual Arts based subject.

‘You work on briefs relating to real companies – it really prepares you for the future in a competitive industry.’

Graphics student

GRAPHIC COMMUNICATION

DESCRIPTION OF COURSE

In Year 12 students will complete a series of skills based workshops designed to cultivate their understanding and abilities in a variety of digital and practical disciplines; as well as developing their knowledge of design tools and strategies. This first component will also consist of at least one extended project where they will gain a strong understanding of the creative design process and knowledge of how to produce in-depth analysis of a range of visual styles. Students will also complete an internally set assignment where they will produce a body of work choosing their own starting point from a range of design briefs applying the knowledge and skills developed from the course so far.

A Level Component 1: Personal Investigation - Students produce a personal investigation brief based on an idea, issue, concept or theme as chosen by them. The investigation should be a coherent, in-depth study that demonstrates the students ability to respond to a brief and develop a sustained line of reasoning from an initial starting point to a final realisation. This is a practical unit with supporting written material of a critical, analytical nature of no less than 1000 words and no more than 3000 words. This component is worth 60% of the overall A Level grade.

A Level Component 2: A Level Externally Set Assignment - Students produce a body of work from a choice of eight starting points completing a final outcome under controlled conditions (15 hours). This component is worth 40% of the overall A Level grade.

ENRICHMENT OPPORTUNITIES

Enrichment opportunities open to students for the A Level course include industry visits, external workshops and inspirational site and residential visits around the UK, Europe and America.

WHY STUDY GRAPHIC COMMUNICATION?

The A Level Graphic Communication course is ideal for students who want to find a way of creatively expressing themselves and allows them to develop their own interests and enjoyment of Graphic Design. The course also gives a solid foundation of knowledge, techniques and processes appropriate to those wishing to pursue Design in Higher Education or a career in the creative industries. This course, skills and knowledge will give them an excellent start to any degree course.

FOR MORE INFORMATION CONTACT: MR C MARTINI • CMARTINI@PRIORYACADEMIES.CO.UK





COURSE: AQA HISTORY

QUALIFICATION: A LEVEL

ASSESSMENT:

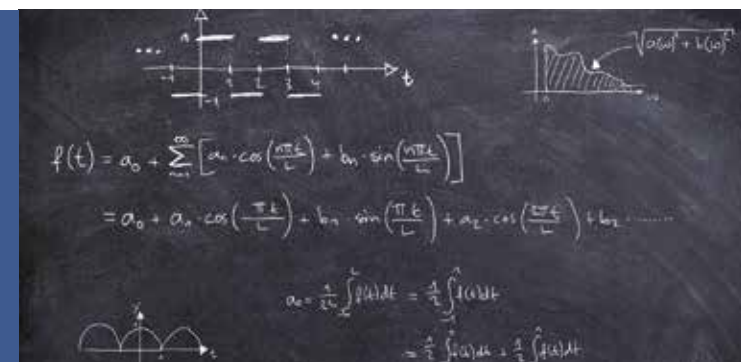
Examinations worth 80% - Coursework 20%

PRE-REQUISIT RECOMMENDATIONS:

To achieve grade 5 or above at GCSE in History

'The course covers diverse but equally significant periods of history which I find extremely interesting.'

History student



'It's challenging but teachers are supportive and the rigour of Mathematics means it is beneficial in the eyes of universities and employers.'

Mathematics student

COURSE: EDEXCEL MATHEMATICS

QUALIFICATION: A LEVEL

ASSESSMENT: One Internal Exam in Year 12 - 2 hour paper, Three External Exams in Year 13 - 2 hour papers.

PRE-REQUISIT RECOMMENDATIONS: In order to access the course we ask that students achieve a minimum grade 7 at GCSE. Students are expected to work on the summer preparation pack and attend bridging sessions in June/July.

HISTORY

DESCRIPTION OF COURSE

In History A Level, we study England between 1485 and 1529, the growth of political stability, the reign of Richard III, the establishment of secure government by Henry VII and the development of Tudor rule under Henry VIII and Wolsey. Issues to be studied include the roles played by the Kings themselves and their relationships with the nobility, councils and parliaments. Following on from this, students explore a period of 60 years of British history, during which the power of the Tudors strengthened both at home and abroad. Students will be taught to demonstrate understanding of key individuals such as Somerset, Northumberland, Burghley, Leicester and the Tudor monarchs themselves in their exercise of political power.

For our depth study, we focus on WW1: the Weimar Republic and the rise of Hitler and the Nazis. How did this Austrian exploit the difficulties of the new democracy and create a mass movement that led to

him being appointed Chancellor in 1933 after being sent to prison for treason 10 years earlier? We also look at life in Nazi Germany, 1933-1945. How Hitler consolidated his power after being appointed Chancellor and turned Germany into a ruthless 1 party dictatorship; how propaganda was used to skilfully create 'the Hitler Myth; how different groups in Germany were controlled, such as youth; the police state and levels of conformity and resistance; the German home front in WW2; and finally the utter collapse of the Third Reich in 1945.

The final part of the A Level gives students the opportunity to deepen their knowledge and understanding of Russian History from a pre-revolution perspective. A coursework essay will look at reform and revolution in Tsarist Russia. Students have to decide what the factors were that led to the fall of the Tsars through guided research. the essay will be 4500 words long.

WHY STUDY HISTORY?

The study of History develops the ability to communicate complex ideas and formulate clear arguments that rely on a combination of evidence and personal opinion. The study of the past leads to an understanding of the complex links between politics, religion, ideas, economic events, social structure and international relations. I has often been reiterated by universities that a sound History qualification will be regarded with favour by Admissions staff.

History, either A Level or degree level, is a tremendously versatile qualification as many of the main professions recognise the value of the skills developed, including accountancy, teaching, local/ national government, the legal profession, media and publishing, museum services, banking and research posts within universities and television.

FOR MORE INFORMATION CONTACT: MR R JACKSON • RJACKSON@PRIORYACADEMIES.CO.UK

MATHEMATICS

DESCRIPTION OF COURSE

Edexcel A Level Mathematics: Acceptance to the Year 13 course will require a minimum grade of D achieved in the Year 12 internal assessment. The course in Year 13 is three modules; Pure, Mechanics and Statistics. The content in Year 13 builds upon the skills gained in Year 12.

Students will be expected to do a considerable amount of independent study if they are to achieve the best from A Level Mathematics.

WHY STUDY MATHEMATICS?

Mathematics at A Level is a highly challenging subject, which offers a wide variety of rewards through being highly regarded for entry to higher education, improved potential in a wide variety of careers but, most importantly, as a study of complex mathematics itself.

Careers favouring Mathematics at a higher level include Medicine, Accountancy, Engineering, Computing, Finance, Law, Marketing and Sciences.

Mathematics at Advanced GCE is a course worth studying not only as a supporting subject for the physical and social sciences, but in it's own right, it is challenging but interesting. It builds on work you will have met at GCSE, but also involves new ideas produced by some of the greatest minds of the last millennium.

FOR MORE INFORMATION CONTACT: MR D MCDONALD • DMCDONALD@PRIORYACADEMIES.CO.UK





COURSE: AQA GCE PHOTOGRAPHY QUALIFICATION: A LEVEL

ASSESSMENT: Year 12: Component 1: Coursework portfolio - 60% of final Year 12 mark. Component 2: Internally Set Controlled Test Assignment - 40% of final Year 12 mark. Year 12 is internally assessed and moderated. Year 13: Component 1: Personal investigation - 60% of final A Level mark. This is a practical investigation supported by written material including an extended essay of up to 3000 words. Component 2: Externally Set Controlled Test Assignment - 40% of A Level mark. Year 13 is externally assessed and moderated by AQA.

PRE-REQUISITE RECOMMENDATIONS: To achieve a minimum of a grade 5 in a Visual Arts based subject.

PHOTOGRAPHY

DESCRIPTION OF COURSE

Students will explore a range of photographic media techniques and processes. They will be made aware of traditional and new technologies. They will learn the appropriate use of the camera, lenses, filters and lighting and the ability to edit and manipulate images using Adobe Photoshop. They will explore the visual language of line, form, colour, pattern and texture in the context of photography and learn to appreciate viewpoint, composition and depth of field.

They will use sketchbooks and journals to record and develop their ideas and with digital techniques produce final images. Students will be introduced to Artists in a variety of genres which will include landscape, wildlife, portraiture, still-life, documentary, photojournalism and sport.

ENRICHMENT OPPORTUNITIES

Gallery visits, Studio visits, Wildlife parks, guest speakers, Location shoots, Residential trips.

WHY STUDY PHOTOGRAPHY?

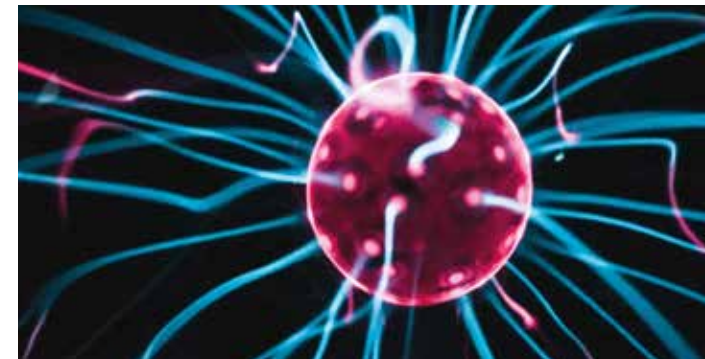
Ideal for those with creative flair interested in a career in the fields of photography, visual arts, journalism or design. This course also provides a strong foundation for those students wishing to pursue Photography or Art & Design in Higher Education.

**Students will be required to provide materials at an additional cost and must have a good quality digital camera at home to enable the completion of extended projects and homework.*

'A Level Photography allows you to rediscover the world around you and the creative nature of the course means you can challenge yourself far beyond the outlines of a syllabus.'

Photography student

FOR MORE INFORMATION CONTACT: MRS B RENSHAW-TURNER • BRENSHAW@PRIORYACADEMIES.CO.UK



'There will always be an answer in Physics - it's not subjective. I really enjoy better understanding the world and how things work.'

Physics student

COURSE: AQA PHYSICS

QUALIFICATION: A LEVEL

ASSESSMENT: 100% through examinations. Key ideas in practical work are tested within the examinations and through practical endorsement.

PRE-REQUISITE RECOMMENDATIONS: To attain a grade 6-6 or above at GCSE Combined Science: Trilogy or grade 6 at GCSE Chemistry. in addition to a grade 6 in GCSE Maths.

PHYSICS

DESCRIPTION OF COURSE

Over the two years, students will study topics related to the main areas in Physics, which are designed to prepare students for further study in Physics. These include:

Particles and Quantum Phenomena – The fundamental properties of matter, radiation and energy; including an introduction to quantum theory and antimatter.

Waves and Optics - The properties and behaviours of waves and an in-depth investigation into the experiments that furthered our understanding of them.

Mechanics - The principles and applications of motion and energy beginning with Newton's Law's and ending with Einstein's theory of relativity. These ideas underpin many work related areas, such as engineering, transport and technology.

Electricity - The physics behind electricity, circuits and superconductors.

Fields - Gravitational fields, electric fields, magnetic fields and how they influence various phenomena; such as motion of the planets and lightning.

Nuclear Physics - Types of radiation and radioactive decay, the energy stored in matter and how we can harness it using nuclear fission and fusion.

WHY STUDY PHYSICS?

The course allows students to study in more detail how the universe around them works. Students will develop their problem solving skills and learn the theories and mathematics behind many phenomena that make the universe tick. The course is a gateway to further study in physics, engineering and other related sciences, but is not exclusively for students intending to pursue a future in science.

FOR MORE INFORMATION CONTACT: MR A MOORE • AMOORE@PRIORYACADEMIES.CO.UK





COURSE: EDEXCEL POLITICS

QUALIFICATION: A LEVEL

ASSESSMENT: 100% through examinations

PRE-REQUISIT RECOMMENDATIONS:
To achieve grade 5 or above in GCSE
English Language

*'The course develops your
critical thinking and ability
to construct a balanced
argument - our class
discussions are brilliant.'*

Politics student

POLITICS

DESCRIPTION OF COURSE

Politics is a dynamic, challenging and exciting subject. The political world is constantly changing and raises big questions that have implications for all of us. By doing this course you will develop a critical awareness of the nature of politics and political belief and the relationship between political ideas, institutions and processes.

In this A Level, you will acquire knowledge and understanding of the structures of political decision-making in the UK, European Union and the USA.

Year 12 explores political processes and decision-making in the UK. Students learn about democracy, political parties and the role of Parliament and local government. The course also goes on to look

at the role of the Prime Minister and the Cabinet in decision-making and the relationships between government, parliament and judiciary in terms of law making.

The course then looks at the development of the US system of government including the role of the Congress, the office of President, the US electoral system including the role of primaries.

Year 13 develops skills in comparing and contrasting the UK and US systems and introduces the work of the European Union, its institutions and electoral system. Students then go on to explore political theory looking at liberalism, socialism and conservatism as well as the rise of nationalism.

WHY STUDY A LEVEL POLITICS?

Politics A Level develops critical skills in essay writing and develops the ability to research and construct a sustained and original argument in debate as well as providing an excellent insight into the impact politics has on our lives.

The overwhelming majority of university course emphasise independent research, essay writing and sustained argument as key skills for success.

Politics provides an excellent foundation for many degree courses and a good springboard for careers in journalism, local government, law, campaigning, social work, education, humanitarian work and of course politics itself.

FOR MORE INFORMATION CONTACT: MR R SHORROCK • RSHORROCK@PRIORYACADEMIES.CO.UK



*'Is there anything more
interesting than human beings?
How our minds work and how
we behave?'*

Psychology student

PSYCHOLOGY

DESCRIPTION OF COURSE

Psychology is the scientific study of the mind and behaviour. The A Level course is linear, meaning that the assessment is in the form of examinations taken at the end of Year 13, which cover content studied throughout the two years.

Topics covered include; Social influence, Memory, Attachment, Psychopathology and Biopsychology. Throughout the course, students gain an understanding of methods used when conducting psychological research and also of the issues and debates within the field of psychology.

WHY STUDY PSYCHOLOGY?

Psychology is a genuinely fascinating subject and gives students an insight into human behaviour. It is an academic subject which is very popular with students who are considering a career in the fields of Law, Education, Mental Health, Research and Childcare among others. It involves and uses skills from the areas of English, Mathematics and Science as a result, strong grades in Psychology A Level demonstrate the students are competent in all three subject areas.

FOR MORE INFORMATION CONTACT: MRS S STEELE • SSTEEL@PRIORYACADEMIES.CO.UK





COURSE: AQA SOCIOLOGY

QUALIFICATION: A LEVEL

ASSESSMENT: 100% through examinations - three 2 hour examinations at the end of the course

PRE-REQUISIT RECOMMENDATIONS:

To achieve minimum grade 5 or above in GCSE English Language or Literature

'The application of theory and knowledge to what is happening in the world today is what most fascinates me in Sociology.'

Sociology student

SOCIOLOGY

DESCRIPTION OF COURSE

Sociology is the study of how humans interact with each other and how society functions at all levels. It looks to explain some of the inequalities in society and looks at the impact of policy change on the way society works and on groups of people. The A Level course is linear, meaning that assessment is in the form of examinations taken at the end of Year 13, which cover content studied throughout the two years.

Topics covered include: education, families and households, crime and deviance. Throughout the course students gain an understanding of methods used when conducting sociological research, and also of various sociological perspectives and theories.

WHY STUDY SOCIOLOGY?

Sociology is, in a nutshell, an insight into everyday life. Students gain an understanding of the political system and become more aware of the way the world works. It is an academic subject, which is very popular with students who are considering a career in the fields of law, education, policing, research and the media amongst others. Students of Sociology A Level will end the course as worldly wise individuals with a wealth of skills which will benefit them in their next steps, be that in education or the world of work. Furthermore, the A Level encourages students to question perceptions and not to accept what they are told or what they read at face value.

FOR MORE INFORMATION CONTACT: MRS S STEELE • SSTEELE@PRIORYACADEMIES.CO.UK





VOCATIONAL SUBJECTS





'I love the fact that Applied Science gives you plenty of opportunities to implement the theory that you learn in a practical way.'

Science student

COURSE: Pearson BTEC Level 3 National Extended Certificate in Applied Science

QUALIFICATION: BTEC Level 3 Extended Certificate

ASSESSMENT: 4 Units - External assessment counts for 58% and internal assessment counts for 42% of the grade.

PRE-REQUISIT RECOMMENDATIONS: In order to access the course we ask that students achieve 5-5 or above at GCSE Combined Science: Trilogy or grade 5 at GCSE Biology, Chemistry or Physics and a 4 at GCSE Mathematics.

'I enjoy the fact that Business Studies combines academic theory with practical application. The different units have undoubtedly prepared me both for university and the world of work.'

Business student



COURSE: BTEC Business

QUALIFICATION: BTEC Level 3 Extended Certificate (equivalent to 1 A Level)

ASSESSMENT: INTERNAL AND EXTERNAL

PRE-REQUISIT RECOMMENDATIONS: Achieve basic entry requirements - see page 10 and a minimum grade 4 at GCSE Mathematics.

APPLIED SCIENCE LEVEL 3 NATIONAL EXTENDED CERTIFICATE

DESCRIPTION OF COURSE

Our Applied Science course takes key elements of Physics, Biology and Chemistry and considers how core concepts can be used in vocational contexts in Science and Science-related organisations.

Students will develop a range of knowledge on aspects such as; animal and plant cells; tissues; atomic structure and bonding; chemical and physical properties of substances related to their uses; waves and their application in communications. Students will apply this knowledge to the chemical industry, medical professions and other industries.

The course allows students to develop their skills with laboratory equipment, procedures and techniques, as well as developing an awareness of safety and organisational skills. Students will use their knowledge and understanding from previous topics to plan and run a scientific investigation and use their research skills to reach conclusions.

Science investigative skills will help students in many scientific or enquiry-based learning courses in higher education, as well as prepare them for employment in a science-related industry.

WHY STUDY APPLIED SCIENCE IN SIXTH FORM?

Applied Science supports further progression in science education, to an Apprenticeship or entry level employment in the science sector, as well as developing a range of transferable skills.

FOR MORE INFORMATION CONTACT: MR J BROOKS • JBROOKS@PRIORYACADEMIES.CO.UK

BUSINESS LEVEL 3 NATIONAL EXTENDED CERTIFICATE

DESCRIPTION OF COURSE

This is a practical course, which will give you the skills for the world of work and help you to add value to business activities in any organisation. You will complete projects and assignments based on realistic workplace situations, activities and demands. The Extended Certificate is for learners who are interested in learning about the business sector alongside other fields of study, with a view to progressing to a wide range of higher education courses, not necessarily in business-related subjects.

You will study three mandatory core topics including; Exploring Business, Developing a Marketing Campaign and Personal and Business Finance. Two of these units are externally assessed with one based on a pre-released synopsis. One unit will be internally assessed. You will also have the opportunity to study one optional unit covering a range of topics, which will be internally assessed.

EXPLORING BUSINESS

In this introductory unit, students study the purposes of different businesses, their structure, the effect of the external environment and how they need to be dynamic and innovative to survive. Students will gain an overview of the key ingredients for business success, how businesses are organised, how they communicate, the characteristics of the environment in which they operate and how this shapes them and their activities.

DEVELOPING A MARKETING CAMPAIGN

In this unit, students will gain skills relating to, and an understanding of how a marketing campaign is developed. Marketing is a dynamic field central to the success of any business. Students will explore the different stages of the process that a business goes through when developing its campaign and develop your own campaign for a given product/service. Students will examine the marketing aims and objectives for existing products/services and understand the importance of relevant, valid and appropriate research in relation to customers' needs and wants.

PERSONAL AND BUSINESS FINANCE

In this unit, students study the purpose and importance of personal and business finance. They will develop the skills and knowledge needed to understand, analyse and prepare financial information. This unit includes aspects of both personal and business finance. It will give you the knowledge and understanding to manage your personal finances and will give you a background to business finance and accounting as you progress to employment or further training.

WHY STUDY BUSINESS?

While it is obvious that those planning on working in most industries and prospective entrepreneurs should study business, everyone should learn as much about business operations as possible. This includes those in scientific, medical, education and government sectors, along with those who are simply consumers of products and services. Becoming knowledgeable about how businesses operate helps increase your competitiveness in the job market and to understand how the businesses and government drive our economies.

FOR MORE INFORMATION CONTACT: MRS J SCHOLEFIELD • JSCHOLEFIELD@PRIORYACADEMIES.CO.UK





COURSE: WJEC Criminology

QUALIFICATION: Level 3 Diploma

ASSESSMENT:

50% Controlled assessment - 50% Examination

PRE-REQUISIT RECOMMENDATIONS:

Achieve basic entry requirements - see page 10, including a minimum grade 4 in English

'If you have an inquiring mind then Criminology is the subject for you! It opens up so many questions and I find exploring the answers captivating.'

Criminology student



'Studying Health and Social Care has really opened my eyes to the different career opportunities and further study routes available relating to the industry - it's so interesting and rewarding.'

Health & Social Care student

COURSE: BTEC Level 3 National Extended Certificate in Health and Social Care

QUALIFICATION: BTEC Level 3 Extended Certificate (1 A Level)

ASSESSMENT: 4 Units of work (3 Mandatory and 1 Optional) - External Assessment 58% (2 Exams, both of which are 1.5hours long)

PRE-REQUISIT RECOMMENDATIONS: Achieve basic entry requirements - see page 10 and a minimum grade 4 at GCSE English.

CRIMINOLOGY LEVEL 3 DIPLOMA

DESCRIPTION OF COURSE

Criminology is the study of the criminal justice system, including how crime is defined and how offenders are processed. The level 3 Diploma course includes elements of internal assessment (controlled assessment) and external assessment (examination). Units 1 and 2 are taught and assessed in Year 12, including one piece of controlled assessment and one examination. Units 3 and 4 are taught and assessed in Year 13, again with one piece of controlled assessment and one examination.

Topics covered include: changing awareness of crime, criminological theories, crime scene to courtroom and crime and punishment. Throughout the course, students gain an understanding of campaigns used within the criminal justice system, as well as how the criminal justice system works from a crime being committed through to prosecution.

WHY STUDY CRIMINOLOGY?

Criminology offers students the opportunity to gain an understanding of the criminal justice system and become more aware of the way the system works.

It is a vocational subject, which is popular with students who are considering a career in the fields of law, criminal justice, social work, probation work and education, amongst others. Students of the Level 3 Diploma in Criminology will end the courses socially aware individuals with a knowledge and understanding of how crime affects our society and how the influence of the media and policy can affect society's views on crime.

HEALTH & SOCIAL CARE LEVEL 3 NATIONAL EXTENDED CERTIFICATE

DESCRIPTION OF COURSE

The Level 3 Extended Certificate in Health and Social Care consists of three mandatory units (83%) plus one optional unit that provide a combined total of 360 learning hours for the completed qualification.

Year 12 looks at the units of Human Lifespan Development (exam) and Meeting Individual Care and Support Needs (internal assessment). **Year 13** looks at the units of Working in Health and Social Care (exam) and one optional unit, chosen from Sociological Perspectives, Psychological Perspectives, Supporting Individuals with Additional Needs and Physiological Disorders and their Care (all internally assessed).

You will complete assignments for each internally assessed unit, these could include; written essays, verbal or written reports, presentations, role plays, case studies, work placement and observations.

WHY STUDY HEALTH & SOCIAL CARE?

The study of Health and Social Care will help you to understand the range of settings in which social care takes place and different roles and types of work available within the healthcare system. On this course, you will study the universal principles of care that are relevant to a wide range of rewarding careers; including social workers, nurses, health visitors and paramedics. The course will also enable you to develop a detailed understanding of the communication skills and safeguarding procedures necessary to work safely and professionally within the health and social care system.

- Enjoy studying a subject that is relevant to their own lives and experiences
- Are interested in developing an understanding of caring organisations and the clients they serve
- Want to study a course which is active and enjoyable
- Want to move onto a related career or higher education course
- Would like to work in the health care sector, teaching, police force, youth work or social work etc.

This qualification supports access to a range of higher education courses possibly, but not exclusively, in health and social care, if taken alongside further Level 3 qualifications. This qualification typically makes up one-third of a study programme.

FOR MORE INFORMATION CONTACT: MR R SHORROCK • RSHORROCK@PRIORYACADEMIES.CO.UK

FOR MORE INFORMATION CONTACT: MISS H WRIGHT • HWRIGHT@PRIORYACADEMIES.CO.UK





COURSE: BTEC Level 3 National Diploma in Health and Social Care

QUALIFICATION: BTEC Level 3 (2 A Levels)

ASSESSMENT: 8 Units of work (6 Mandatory and 2 Optional) - External Assessment 46% (2 Exams, both of which are 1.5hours long)

PRE-REQUISIT RECOMMENDATIONS:
Achieve basic entry requirements - see page 10 and a minimum grade 4 at GCSE English.

'Health and Social Care combines a fantastic learning environment with in-depth course content and practical experience of working with the public.'

Health & Social Care student

HEALTH & SOCIAL CARE LEVEL 3 NATIONAL DIPLOMA

DESCRIPTION OF COURSE

The Level 3 Diploma in Health and Social Care consists of six mandatory units (83%) plus two optional units that provide a combined total of 720 learning hours for the completed qualification.

Year 12 looks at the units of Human Lifespan Development (exam), Meeting Individual Care and Support Needs (internal assessment), Promoting Public Health (internal assessment) and Work Experience in Health and Social Care. Year 13 looks at the units of Working in Health and Social Care (exam), Enquiries into current research in Health and Social Care (external assessment), Principles of Safe Practice in Health and Social Care (internal assessment) and Physiological Disorders and their Care (internal assessment).

COMPULSORY WORK PLACEMENTS WILL BE CARRIED OUT IN A HEALTH AND SOCIAL CARE SETTING BY ALL STUDENTS ON THIS COURSE AS PART OF THE WORK EXPERIENCE IN HEALTH AND SOCIAL CARE UNIT.

You will complete assignments for each internally assessed unit, these could include; written essays, verbal or written reports, presentations, role plays, case studies, work placement and observations.

WHY STUDY HEALTH AND SOCIAL CARE?

The study of Health and Social Care will help you to understand the range of settings in which social care takes place and different roles and types of work available within the healthcare system. On this course, you will study the universal principles of care that are relevant to a wide range of rewarding careers; including social workers, nurses, health visitors, carers and paramedics. The course will also enable you to develop a detailed understanding of the communication skills and safeguarding procedures necessary to work safely and professionally within the health and social care system.

This course can be taken alongside one other qualification, for example: An A Level in Biology, which could lead onto a BSc (Hons) in Nursing or Midwifery, an A Level in Sociology, which could lead to a BA (Hons) in Social Work, a BTEC Certificate in Sport, which could lead to a BSc (Hons) in Physiotherapy or an A Level in Psychology, which could lead to a BSc (Hons) in Psychology.

This interesting and wide ranging level 3 course can lead you onto university, an Apprenticeship or straight into employment. As well as focusing on Health and Social Care issues, it may be possible to gain qualifications in Food Hygiene and First Aid. You'll also have the opportunity of valuable work experience in a placement with local health and care providers.

FOR MORE INFORMATION CONTACT: MISS H WRIGHT • HWRIGHT@PRIORYACADEMIES.CO.UK



COURSE: Cambridge Technical Level 3 IT

QUALIFICATION: Cambridge Technical Extended Certificate (equivalent to 1 A Level)

ASSESSMENT: Internal and External

PRE-REQUISIT RECOMMENDATIONS:
Achieve basic entry requirements - see page 10 including a minimum grade 4 at GCSE English.

'The course is so relevant to the digital world we live in and really prepares you for variety of jobs in the industry.'

Digital Media student

IT LEVEL 3 NATIONAL EXTENDED CERTIFICATE

DESCRIPTION OF COURSE

The course in IT has been designed to develop knowledge and understanding of the principles of IT and global information systems. You will gain an insight into the IT sector as you investigate the pace of IT infrastructure, the flow of information of a global scale and important legal and security considerations. In the two years you will complete five units. Three of the units are mandatory, and are externally assessed. They are; Fundamentals of IT (Unit 1), Global Information (Unit 2) and Cyber Security (Unit 3).

The optional units will include two of the following: Project Management, Product Development, System Analysis and Design and Internet of Everything.

FOR MORE INFORMATION CONTACT: MISS L COOTES • LCOOTES@PRIORYACADEMIES.CO.UK

WHY STUDY DIGITAL MEDIA?

You will develop transferrable skills such as planning, communication and problem solving. The optional units will encourage the development of time management, research and analytical skills, as well as emphasising the need for good written and verbal communication.

Completion for this course can support progression to go on to study relevant IT degrees in Higher Education institutions such as, Computing and IT, Computer Science, Software Development as well as IT-related apprenticeships.



'Law is genuinely interesting and impacts on so many parts of our lives. It is relevant to so many areas of further study and future careers.'

Law student

COURSE: BTEC National Extended Certificate in Applied Law

QUALIFICATION: BTEC LEVEL 3 Extended Certificate (equivalent to 1 A Level)

ASSESSMENT: Coursework, One external exam in Applying the Law, One controlled assessment - Dispute Solving in Civil Law

PRE-REQUISIT RECOMMENDATIONS: Achieve basic entry requirements - see page 10 including a minimum grade 4 at GCSE English.

APPLIED LAW LEVEL 3 NATIONAL EXTENDED CERTIFICATE

DESCRIPTION OF COURSE

Law is one of the most useful and interesting academic subjects to study as it affects nearly all aspects of our everyday life. Law at The Priory Ruskin Academy is taught to the new BTEC specification.

Year 12 focuses on:

Unit 1 - Dispute solving in Civil Law.

Students will explore how civil disputes are resolved, both in the courts and by alternative means. They will examine the making and working of legal precedent and its application in the law of negligence.

Unit 2 - Investigating Aspects of Criminal Law and the Legal System

Students will research how laws are made and interpreted, who advises and decides on the

outcome of criminal cases and the punishments that can be imposed if laws are broken. They will then present advice to clients on non-fatal offence case studies.

Year 13 focuses on:

Unit 3 - Applying the Law

Learners examine the law related to specific crimes, including homicide and offences against property. They will explore the police procedures for dealing with such offences.

Unit 4 - Aspect of Family Law

Students explore the requirements of a valid marriage and civil partnership, the laws governing the breakdown of relationships, as well as how disputes over children are resolved by the courts.

ENRICHMENT OPPORTUNITIES

Possible court visits/ Prison visits to understand the English Legal System and the sentencing/ rehabilitation of offenders. Possible visits to the Inns of Court and Westminster to understand the legal profession and sources of law. We also run an extra-curricular Law Club and take part in the Bar Mock Trials national competition.

WHY STUDY LAW?

BTEC Extended Certificate in Applied Law (level 3) is not only an excellent qualification for progression to University and the legal profession, studying Law develops skills they are highly sought by employers; eg - analytical, research and communication skills. Studying Law can be useful for careers in Public Services, Civil Service, Human Resources, Business and Banking, Teaching, Social Work and Research.

FOR MORE INFORMATION CONTACT: MR R SHORROCK • RSHORROCK@PRIORYACADEMIES.CO.UK

COURSE: PERFORMING ARTS

QUALIFICATION: BTEC LEVEL 3 Foundation Diploma (equivalent to 1.5 A Levels)

ASSESSMENT: 60% Coursework (Internal Assessment) 40% Set Task (External Assessment) The Foundation Diploma is weighted more towards coursework than examinations and will suit learners who prefer this approach. Awards will be made at Pass, Merit or Distinction.

PRE-REQUISIT RECOMMENDATIONS: Achieve basic entry requirements - see page 10

PERFORMING ARTS LEVEL 3 FOUNDATION DIPLOMA

DESCRIPTION OF COURSE

Students will complete a series of practical tasks set in a work related scenario and complete written assignments set and marked internally. Students will also complete two externally set tasks under controlled conditions, which will be assessed by BTEC Pearson. The Foundation Diploma counts as one option choice but is equivalent to 1.5 A Levels, which means it will be worth more UCAS points; for example, a Merit on this course carries the same UCAS points (48) as a Distinction on the BTEC Extended Certificate course or an 'A' Grade at A Level.

The course consists of four mandatory units and two optional units:

Mandatory Units:

Unit 1 Investigating Practitioners' work (Controlled written assessment - Externally assessed)

Unit 2 Developing Skills & Techniques for live Performance (Practical and coursework - Internally assessed)

Unit 3 Group Performance Workshop (Practical task and written log - Externally assessed)

Unit 4 Performing Arts in the Community (Practical and coursework - Internally assessed)

Optional Units - the two optional units are adapted each year to suit the needs of each intake of learners (Practical and coursework - Internally assessed)*

ENRICHMENT OPPORTUNITIES

- See live performances
- Work with professional performers
- Perform to live audiences
- Perform in the wider community
- Travel to London for a residential trip, where you will take part in professional performances and see West End shows

WHY STUDY PERFORMING ARTS?

You will enjoy studying this course if you -

- Have a passion for performing
- Want to develop your communication skills, self-confidence and physical and mental wellbeing
- Want to progress to Higher Education
- Want to work in careers where having empathy for others is important, for example; Social Care, Health Care, Education
- Want to work in careers where public speaking is important, for example; Law, Business, Education
- Want to work in the Performing Arts industry in a variety of different roles, for example; Performing, Technical and Creative careers.

Performing Arts student

FOR MORE INFORMATION CONTACT: MISS A HAYWOOD • AHAYWOOD@PRIORYACADEMIES.CO.UK





COURSE: BTEC Level 3 Extended Certificate in Sport

QUALIFICATION: BTEC LEVEL 3 Extended Certificate (equivalent to 1 A Level)

ASSESSMENT: The Extended Certificate consists of 4 units - 3 Mandatory and 1 Optional, including Internal and External assessment and formal exam

PRE-REQUISIT RECOMMENDATIONS:
Achieve basic entry requirements - see page 10 including a minimum grade 4 at GCSE English.

‘I like how we get to learn how we can improve all aspects of Performance, for example nutrition, training and the psychology of sport’

Sport student

SPORT LEVEL 3 NATIONAL EXTENDED CERTIFICATE

DESCRIPTION OF COURSE

The Extended certificate consists of four units; Three mandatory and one optional, including Internal and External assessment and formal exam.

Year 12 looks at the units of *Anatomy and Physiology and Professional Development in the Sports Industry*.

Year 13 looks at the units of *Fitness Training and Programming for Health, Sport and Well-Being and Practical Sports Performance*.

You will complete assignments for each internally assessed unit and these could include; written essays, verbal or written reports, presentations, role plays, case studies, work placement and observations.

WHY STUDY SPORT?

This is a very exciting, challenging qualification which can provide a direct route to university or prepare learners for entry into the world of work. It provides an excellent stepping stone for those students who are interested in the following careers.

- Sports management
- Sports Coaching
- Physiotherapy
- Fitness instruction

FOR MORE INFORMATION CONTACT: MR A CAIRNS • ACAIRNS@PRIORYACADEMIES.CO.UK



COURSE: BTEC Level 3 National Diploma in Sport

QUALIFICATION: BTEC Level 3 Diploma (Equivalent to 2 A Levels)

ASSESSMENT: 10 Units of work (7 Mandatory and 3 Optional) - Internal and External assessment and Formal exam

PRE-REQUISIT RECOMMENDATIONS:
Achieve basic entry requirements - see page 10 and a minimum grade 4 at GCSE English.

‘I really enjoy how we get to apply the theory to practice and see how the body responds and adapts to exercise.’

Sport student

SPORT LEVEL 3 NATIONAL DIPLOMA

DESCRIPTION OF COURSE

The new Level 3 Diploma in Sport consists of seven mandatory and three optional units that provide for a combined total of 720 learning hours for the completed qualification.

Year 12 looks at the units of *Anatomy and Physiology, Fitness Training and Programming for Health, Sport and Wellbeing, Professional Development in the Sports Industry, Sports Leadership and Application of Fitness Testing*.

Year 13 looks at the units of *Self-employment in the Sports Industry, Instructing Gym Based Exercise, Exercise and Circuit Based Activity and Sports Injury Management*.

You will complete assignments for each internally assessed unit and these could include; written essays, verbal or written reports, presentations, role plays, case studies, work placement and observations.

WHY STUDY SPORT?

This is a very exciting, challenging qualification which can provide a direct route to university or prepare learners for entry into the world of work. It provides an excellent stepping stone for those students who are interested in the following careers.

- Sports management
- Sports Coaching
- Physiotherapy
- Fitness instruction

FOR MORE INFORMATION CONTACT: MR A CAIRNS • ACAIRNS@PRIORYACADEMIES.CO.UK



NEXT STEPS

Application Deadline

Friday 2nd December 2022

Offer letters sent to home addresses

Friday 3rd February 2023

Find our online application form at: www.prioryruskin.co.uk/sixthform/admissions



THE PRIORY RUSKIN ACADEMY

ADDRESS

Rushcliffe Road, Grantham,
Lincolnshire, NG31 8ED

TELEPHONE

01476 410410

EMAIL

sixthformadmissions@prioryacademies.co.uk

WEBSITE

www.prioryruskin.co.uk

HEADTEACHER

Ms R Wyles

HEAD OF SIXTH FORM

Mr A Cairns

THE PRIORY FEDERATION OF ACADEMIES TRUST CHIEF EXECUTIVE

Mr I Jones
Priory House, Cross O'Cliff Hill,
Lincoln LN5 8PW

THE PRIORY FEDERATION OF ACADEMIES TRUST CHAIR OF TRUSTEES

Mr H Gee
Priory House, Cross O'Cliff Hill,
Lincoln LN5 8PW





The Priory Ruskin Academy, Rushcliffe Road, Grantham, Lincolnshire, NG31 8ED

Tel: 01476 410410 **Email:** sixthformadmissions@prioryacademies.co.uk

www.prioryruskin.co.uk