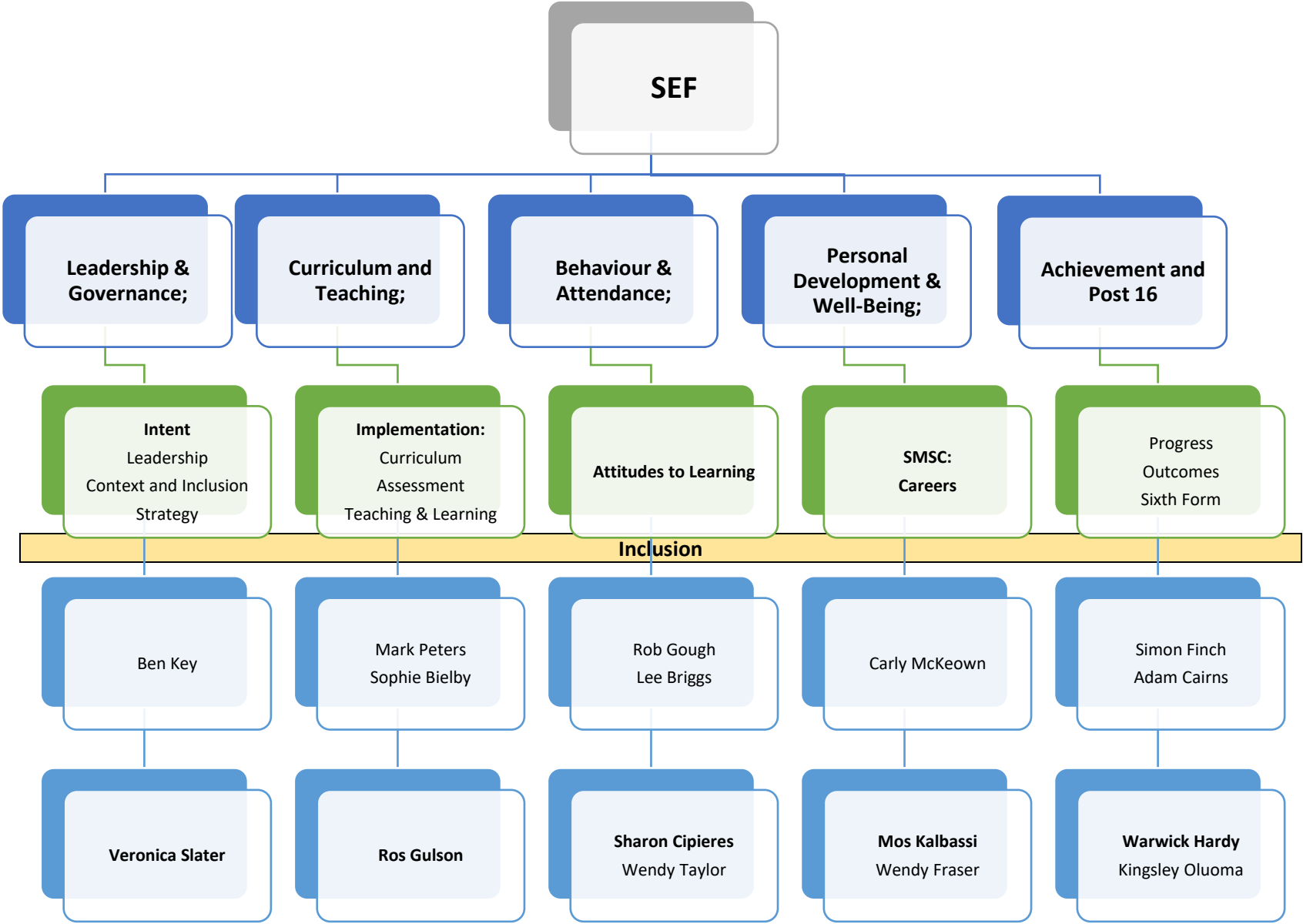


Governor/SLT Link Structure 2025-26



Safeguarding Lead: S Cipieres (C McKeown)	Careers Lead: M Kalbassi (C McKeown)	Chair Pupil Disciplinary: R Gulson
SEND Lead: W Taylor (K Shelford)	Disadvantaged Lead: R Gulson (K Shelford)	PDC panel: V Slater, M Kalbassi